

SENSIT[®] FMD

FIXED METHANE DETECTOR

CONTINUOUS METHANE EMISSION MONITORING



Measures Methane Down To 200PPB

Optional Additional Sensors

(VOC, H₂S, NH₃, CO, NO, NO₂, SO₂, O₂)

Transmits Data To Remote Server

Data Used For Plume Modeling

Alerts You During Upset Conditions



REDUCING EMISSIONS WITH BETTER DATA!

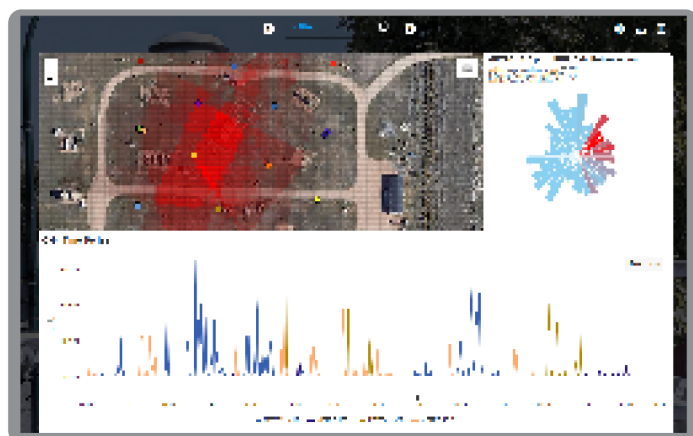
WIRELESS CONNECTIVITY

CELLULAR, WIFI, PRIVATE NETWORK

USE YOUR OWN DASHBOARD
OR USE SENSIT CONNECT



ADVANCED POLLUTION TRACKING, LEAK
LOCALIZATION, AND QUANTIFICATION
AVAILABLE UPON REQUEST



ADDITIONAL

SIZE

D x W x H (8" x 12" x 24")

WEIGHT

15 lbs approx

OPERATING TEMP

-20°C to 50°C (-4°F to 122°F)

OPERATING HUMIDITY

0% and <95% non-condensing

OPERATING RUNTIME

5-7 Days Battery Backup

POWER CONSUMPTION

Less than 2 Watts

ULTRASONIC & MECHANICAL WEATHER STATION

WIND SPEED, DIRECTION, HUMIDITY, TEMPERATURE, PRESSURE



TDLAS METHANE DETECTOR

PARAMETER	DESCRIPTION
Technologies	Near IR TDLAS
Wavelength	~ 1650 nm
Methane Range	0-100 vol %
Methane Resolution	0.2 ppm (200ppb)
Methane Accuracy	10% (± 0.5 ppm min)
Laser Life	>5 years
Pre-Filter Life	~ 6 months
Internal-Filter Life	~ 6 months
Pump Life	10,000 hrs
Laser Class	IIIR

SOLAR PANEL

